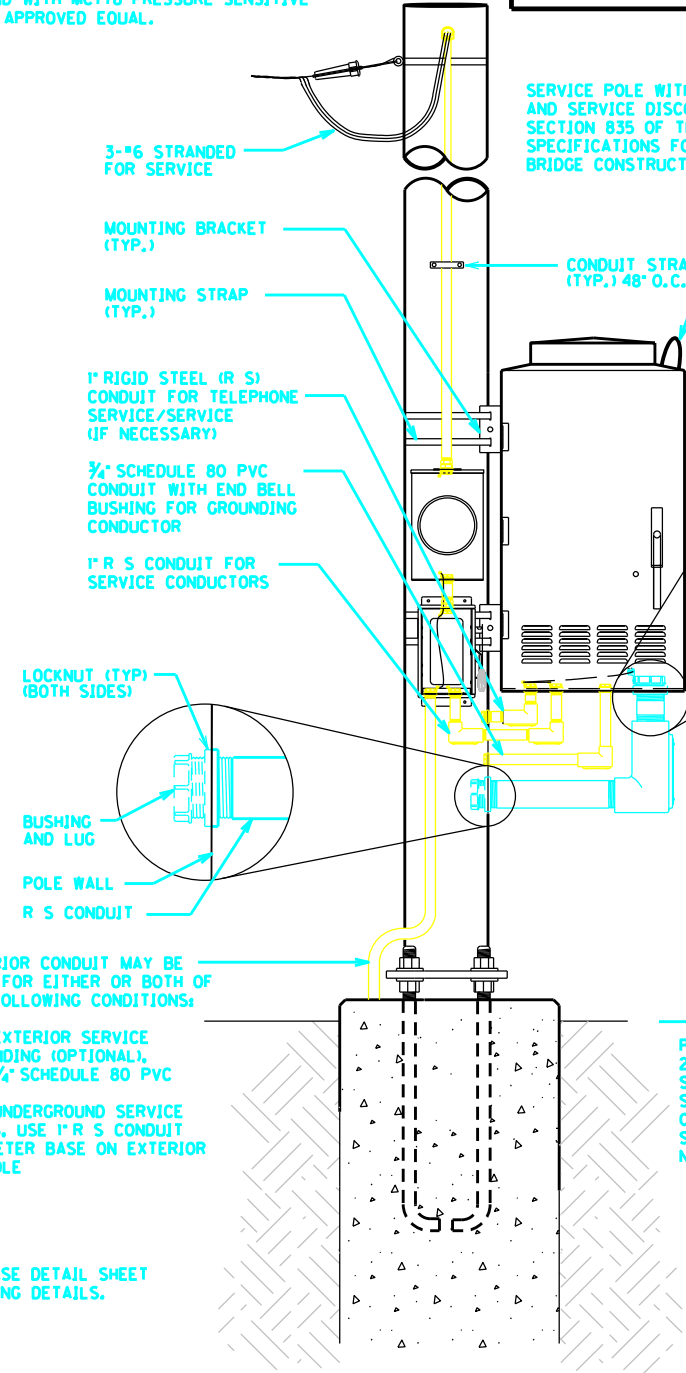
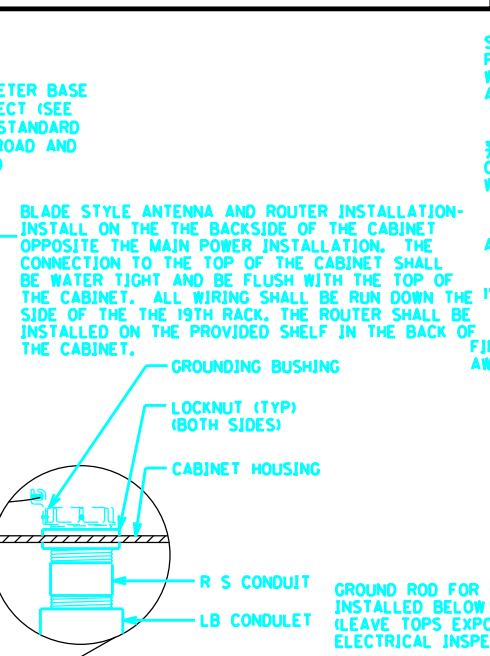


SPECIAL NOTE:
DISCONNECTS (SAFETY SWITCH) AND METER BASE SHALL BE UL RATED FOR COMMERCIAL USE. DISCONNECTS (SAFETY SWITCH) AND METER BASE SHALL BE ALUMINUM ENCLOSURE. THE CONTRACTOR SHALL BE RESPONSIBLE TO CALCULATE THE MAXIMUM AVAILABLE FAULT CURRENT FOR THE SERVICE EQUIPMENT THAT IS INSTALLED. THE CONTRACTOR SHALL SUPPLY A STICKER THAT WILL BE INSTALLED IN THE DISCONNECT WITH THE SYMMETRICAL RMS AMPERES AND THE DATE THAT THIS FAULT CURRENT IS CALCULATED. THE STICKER SHALL BE 4" LONG AND 4" WIDE AND BE METALCRAFT PLY425 PREM STYLEMARK LABEL (OR APPROVED EQUAL) WITH .007 THICKNESS, WITH UV WHITE POLYCARBONATE MATERIAL, AND WITH MC778 PRESSURE SENSITIVE ADHESIVE OR APPROVED EQUAL.

NOTES:
ALL CONDUITS USED FOR THE TELEPHONE, GROUNDING, SPARES, AND SERVICE (INCLUDING FLEX CONDUIT IF IT IS RUN INSIDE THE POLE) THAT ARE INSTALLED ON THE POLE AND/OR IN THE CABINET BASE ARE INCIDENTAL TO BID ITEM "4931". THIS INCLUDES PROVIDING A MINIMUM OF 24 INCHES OF CONDUIT PAST THE EDGE OF THE CONCRETE PAD.
ALL CONDUITS SHALL BE INSTALLED BETWEEN 4 TO 6 INCHES ABOVE THE CONCRETE PAD, AND THEY CANNOT EXCEED THE 6 INCH HEIGHT.
SERVICE WIRES FOR BASE MOUNTED CABINETS MAY BE INSTALLED IN FLEXIBLE CONDUIT FROM THE DISCONNECT TO THE 1" RIGID STEEL CONDUIT INSIDE THE POLE BASE. USE THE PROPER CONNECTIONS FOR TRANSITION FROM FLEXIBLE CONDUIT TO R/S CONDUIT. FLEXIBLE CONDUIT SHALL NOT BLOCK THE HAND HOLE OR THE ABILITY TO ACCESS THE GROUNDING SYSTEM.

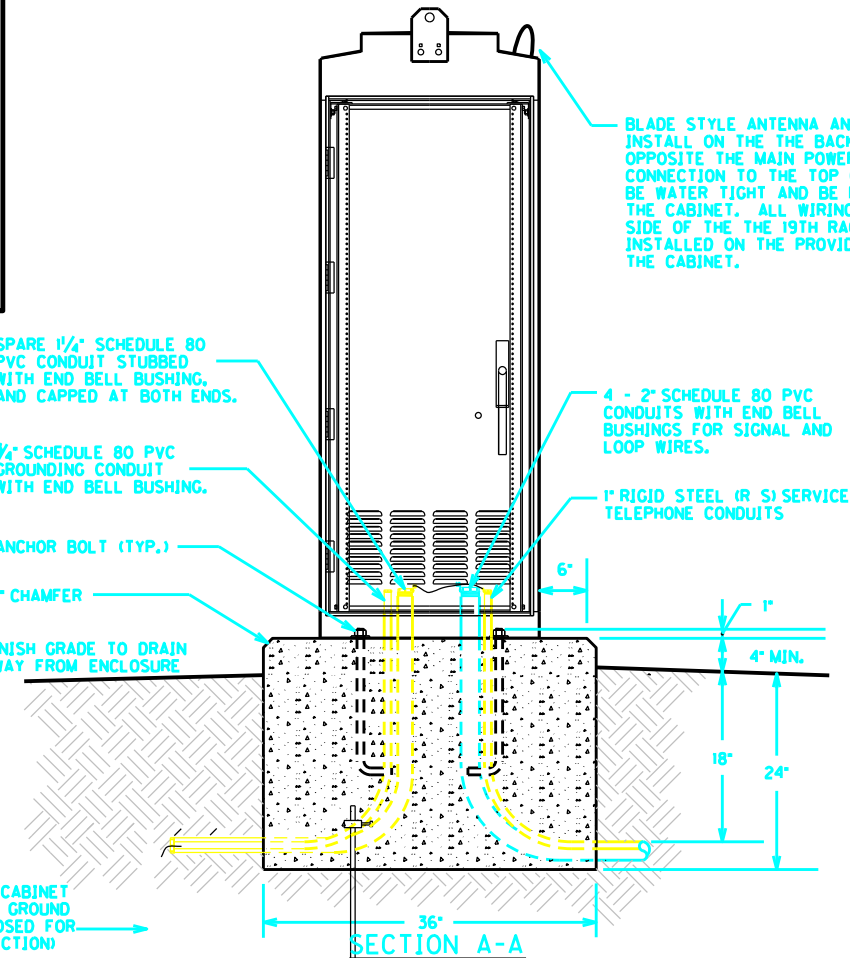


STEEL POLE MOUNT ENCLOSURE

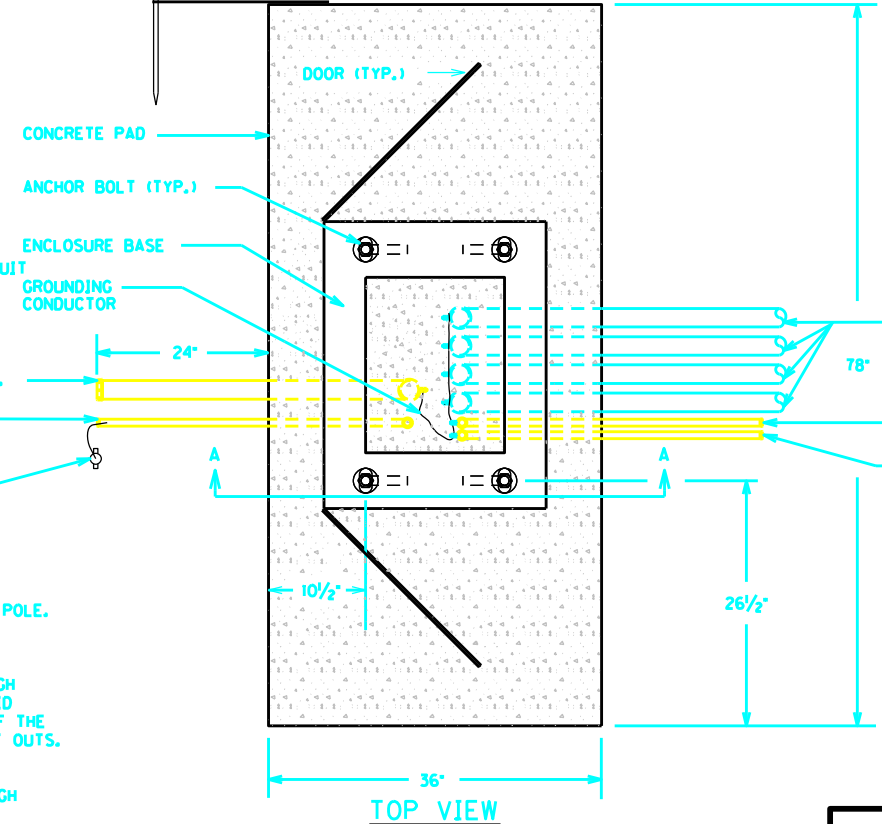


SPECIAL NOTE FOR THE DISCONNECT:
ONLY CONNECT ONE SIDE OF THE 120 VOLT IN THE DISCONNECT. THE OTHER SIDE OF THE 120 VOLT SHALL STILL BE INSTALL IN METER BUT NOT FEED DOWN TO THE DISCONNECT. FURNISH A SHOCK HAZARD WARNING STICKER ON DISCONNECT WITH THE FOLLOWING INFORMATION:
VOLTAGE (120 VOLT)
GLOVE CLASS (0)
LIMITED APPROACH BOUNDARY (42 IN)
RESTRICTED APPROACH BOUNDARY (CONTACT)
SEE NFPA 70E FOR ADDITIONAL PPE REQUIRED

GROUNDING REQUIREMENTS:
CONTRACTOR SHALL PROVIDE A MINIMUM OF 6 INCHES OF GROUND WIRE FOR TESTING PRIOR TO CONNECTING THE WIRE TO ANY DISCONNECT, CABINET OR POLE.
LEAVE TOP OF GROUND RODS EXPOSED FOR ELECTRICAL INSPECTION.
SERVICE GROUND - GROUND WIRE SHALL COME FROM THE GROUND ROD THROUGH THE PVC CONDUIT, CONNECTING TO THE DISCONNECT AND THEN TO EACH RIGID STEEL (R/S) GROUNDING BUSHING. IF GROUND WIRE IS RUN ON THE INSIDE OF THE POLE, RUBBER GROMMETS SHALL BE PROVIDED AT DISCONNECT AND POLE CUT OUTS. THEY SHALL BE INCIDENTAL TO BID ITEM "4931".
CABINET GROUND - GROUND WIRE SHALL COME FROM THE GROUND ROD THROUGH THE PVC CONDUIT, CONNECTING TO THE CABINET GROUND BUS.



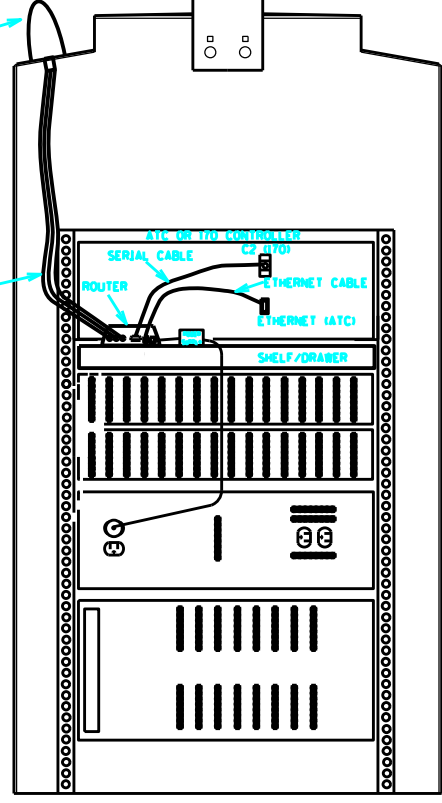
SECTION A-A



TOP VIEW

PAD MOUNT ENCLOSURE

BLADE STYLE ANTENNA AND ROUTER INSTALLATION:
INSTALL ON THE THE BACKSIDE OF THE CABINET OPPOSITE THE MAIN POWER INSTALLATION. THE CONNECTION TO THE TOP OF THE CABINET SHALL BE WATER TIGHT AND BE FLUSH WITH THE TOP OF THE CABINET. ALL WIRING SHALL BE RUN DOWN THE SIDE OF THE THE 19TH RACK. THE ROUTER SHALL BE INSTALLED ON THE PROVIDED SHELF IN THE BACK OF THE CABINET.



ROUTER INSTALLATION (REAR OF CABINET)

4- 2" (MIN.) SCHEDULE 80 PVC CONDUITS TO POLE BASE WITH END BELL BUSHING. CONTRACTOR SHALL MODIFY QUANTITY OF CONDUITS IN ORDER TO PROVIDE 1 SPARE CONDUIT AND COMPLY WITH NEC REQUIREMENTS

1" R/S CONDUIT FOR SERVICE
1" R/S CONDUIT FOR TELEPHONE (IF NECESSARY)

SPECIAL NOTE FOR THE CABINET:
FURNISH A WARNING STICKER ON CABINET WITH THE FOLLOWING INFORMATION:
ARC FLASH HAZARD
NO ARC FLASH PPE REQUIRED PER NFPA 70E
SHOCK FLASH HAZARD
VOLTAGE (120 VOLT)
GLOVE CLASS (0)
LIMITED APPROACH BOUNDARY (42 IN)
RESTRICTED APPROACH BOUNDARY (CONTACT)
SEE NFPA 70E FOR ADDITIONAL PPE REQUIRED

CONTROLLER CABINET AND ANTENNA/ROUTER DETAIL

FILE NAME: C:\PWORK\TED.SWANSEGOR\MS28756\03-CABINET BASE (CAL.DGN)
USER: Ted.Swansegor
DATE PLOTTED: August 18, 2022
E-SHEET NAME:
Power_InRoads v8.11.3.397
5/4/2021