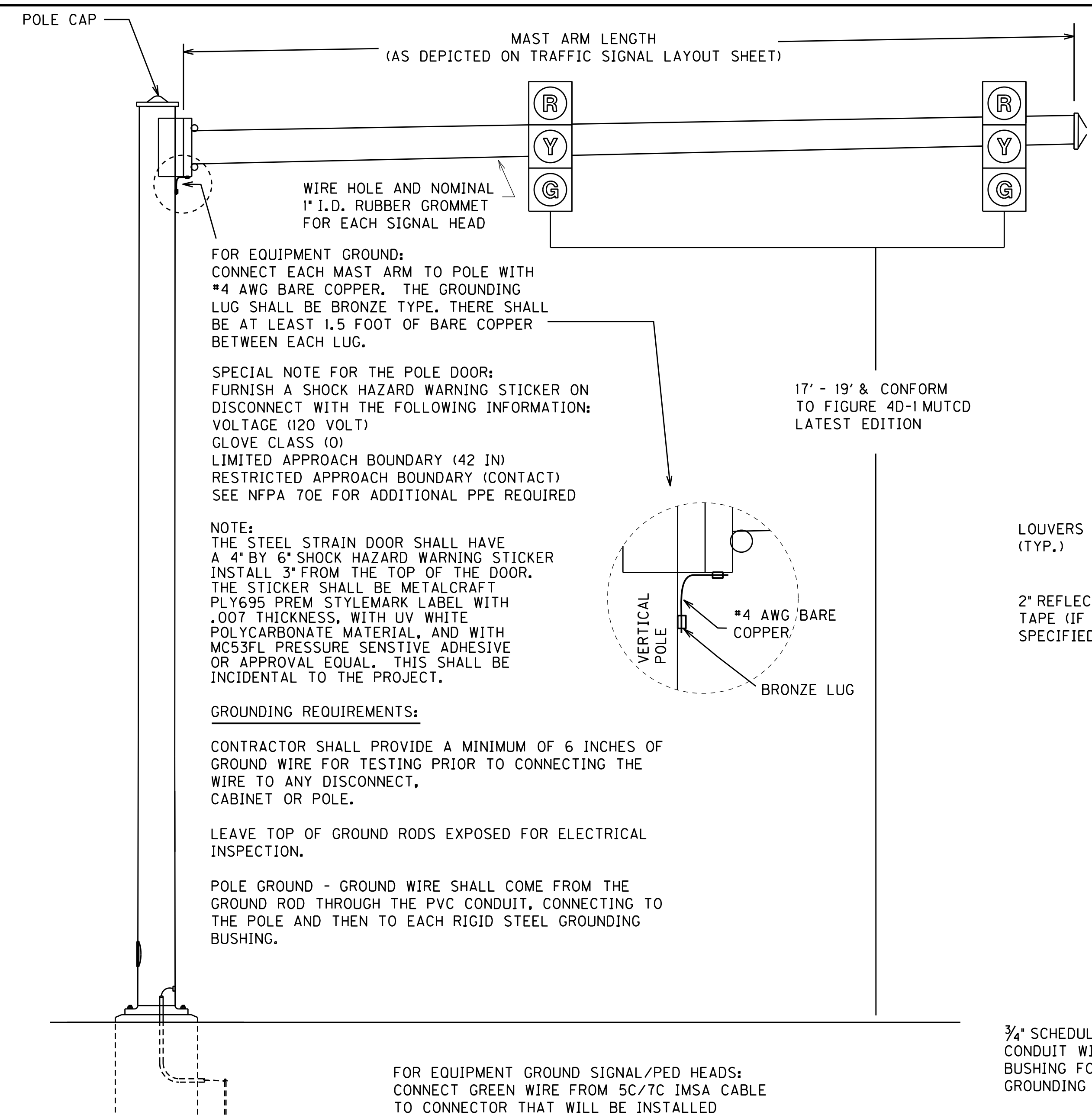


FILE NAME: C:\P\WORK\JESSICA.GOODWIN\MS28756\08-MAST ARM MONO (MA).DGN
 USER: jessica.goodwin
 DATE PLOTTED: July 9, 2024
 E-SHEET NAME:
 Power InRoads v8.11.9.387



MONOTUBE MAST ARM POLE DETAIL

NOTES:

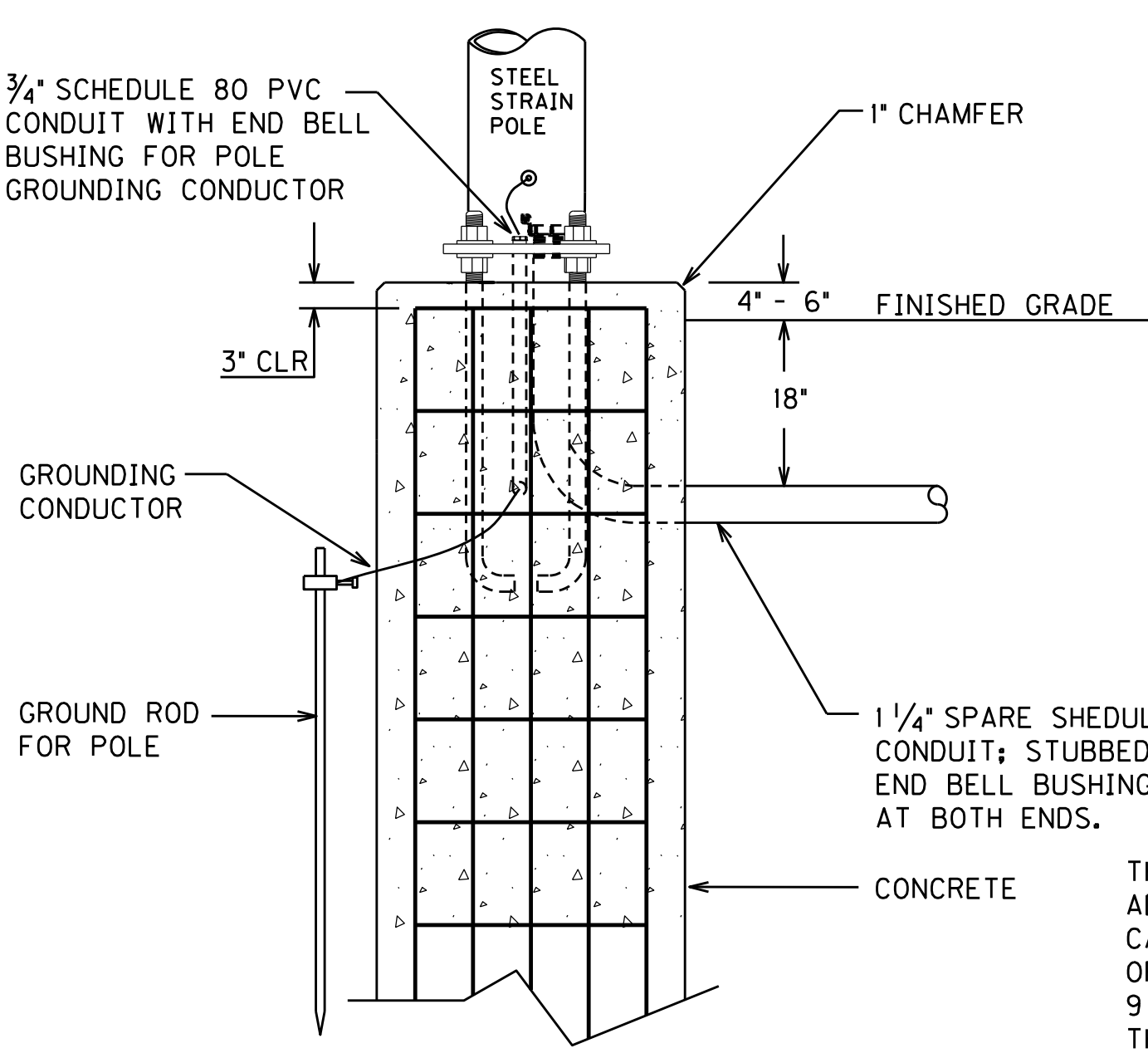
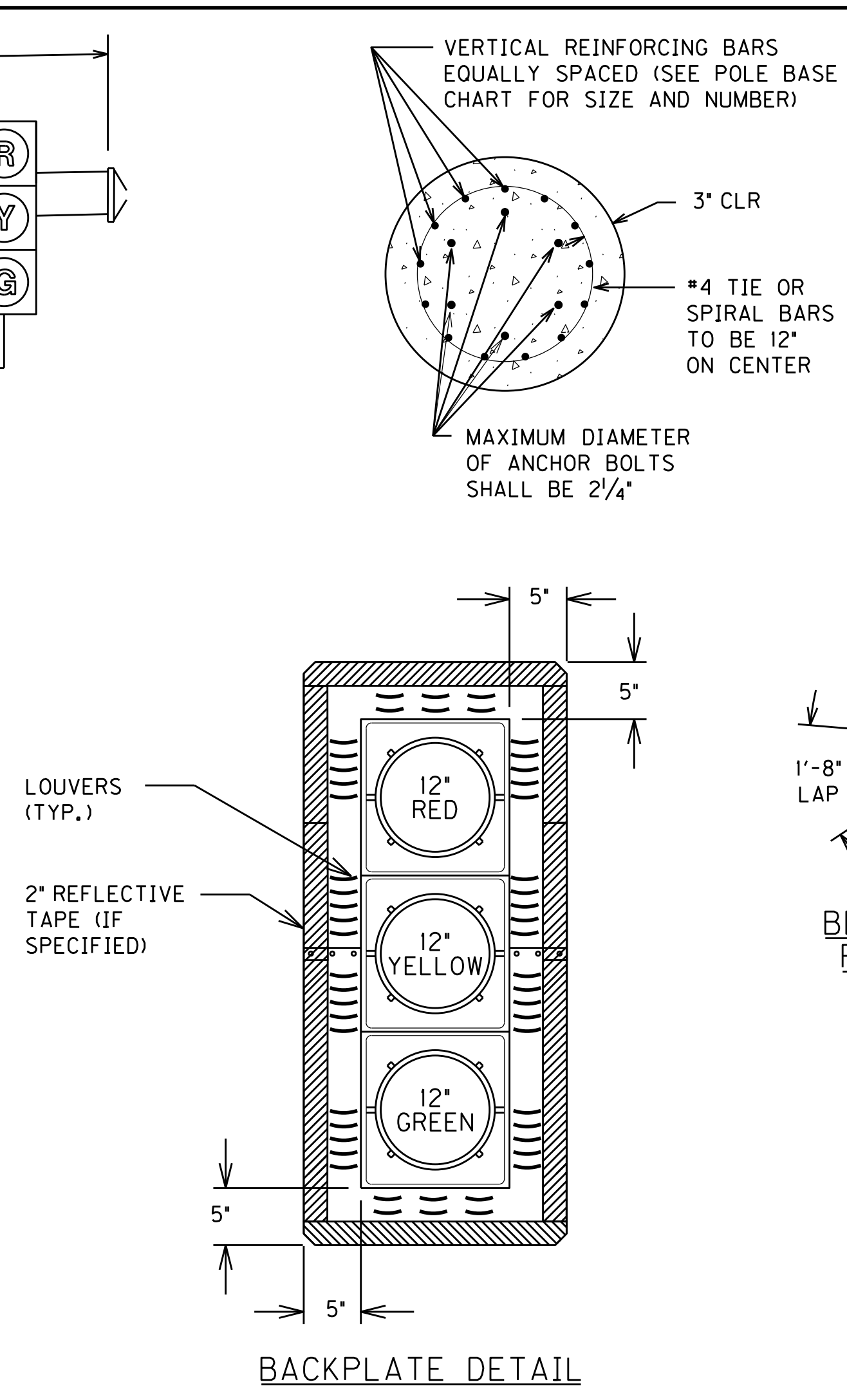
ALL CONDUITS USED FOR THE TELEPHONE, GROUNDING, SPARE, AND SERVICE THAT ARE INSTALLED IN THE POLE BASE ARE INCIDENTAL TO BID ITEM '23157EN'. THIS INCLUDES PROVIDING A MINIMUM OF 24 INCHES OF CONDUIT PAST THE EDGE OF THE CONCRETE POLE BASE.

ALL CONDUITS SHALL BE INSTALLED 6 INCHES ABOVE THE CONCRETE POLE BASE.

FOR POLE BASE DEPTH SEE CHART IN SECTION 723 OF THE KENTUCKY STANDARD SPECIFICATIONS FOR ROAD AND BRIDGE CONSTRUCTION, CURRENT EDITION.

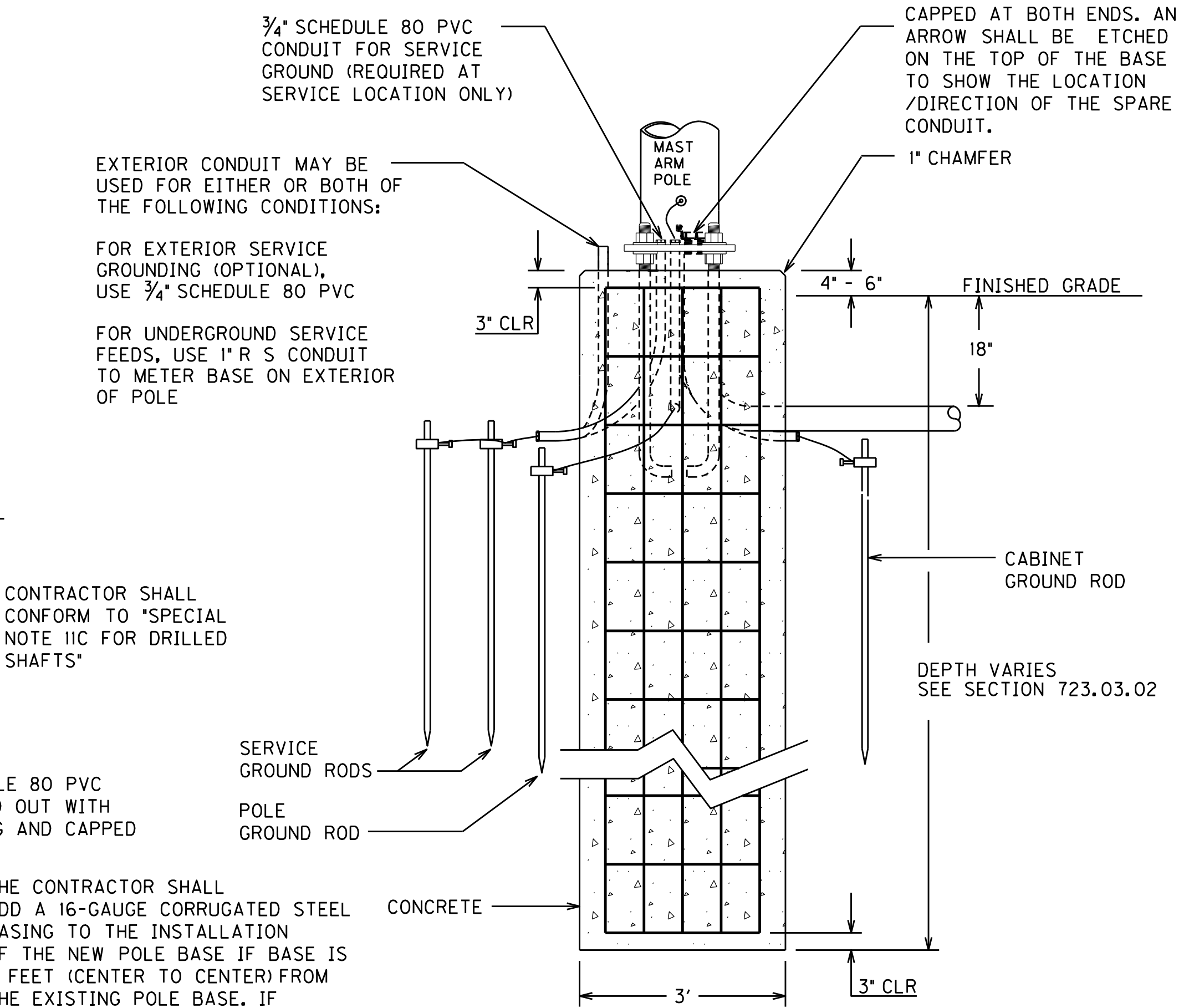
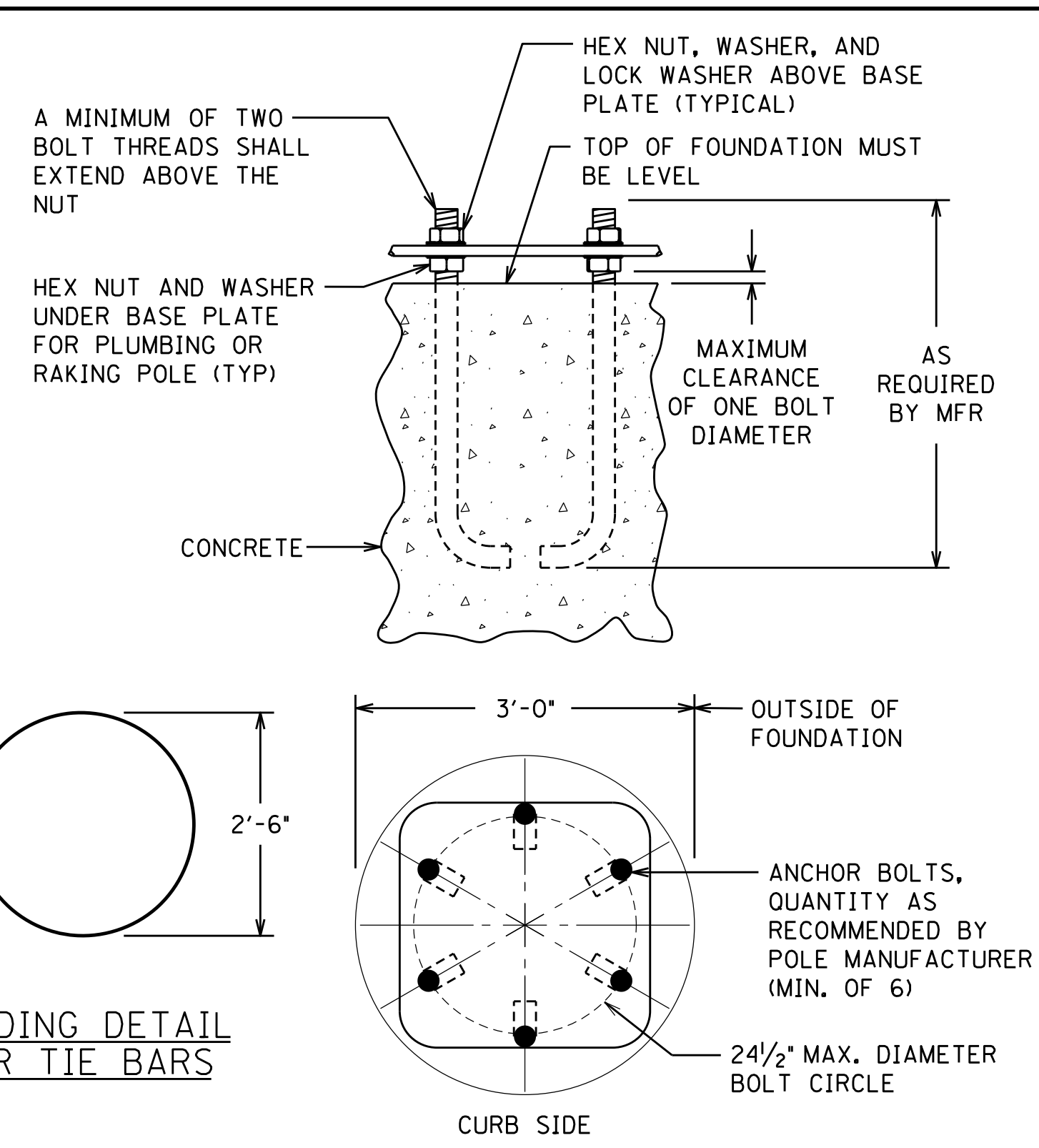
OVERHEAD SERVICE WIRES SHALL BE INSTALLED ON THE EXTERIOR OF THE POLE IN A 3/4" RIGID STEEL CONDUIT WITH WEATHERHEAD, OR ON THE INSIDE THE STEEL STRAIN POLE IN FLEXIBLE CONDUIT.

UNDERGROUND SERVICE WIRES SHALL BE INSTALLED IN 3/4" RIGID STEEL CONDUIT AS SHOWN ON THE CONTROLLER CABINET DETAIL SHEET.



MAST ARM POLE BASE WITH POLE GROUND DETAIL

THE CONTRACTOR SHALL INSTALL SPACERS ON THE POLE BASE CAGES (TOP, BOTTOM, & SIDES) TO GUARANTEE A 3" COVER TO THE EDGE OF THE POURED CONCRETE. THE SPACERS SHALL CONFORM TO 'SPECIAL NOTE IIC'.



MAST ARM POLE BASE WITH SERVICE, POLE, AND POLE MOUNTED CABINET GROUNDING DETAILS

THE CONTRACTOR SHALL ADD A 16-GAUGE CORRUGATED STEEL CASING TO THE INSTALLATION OF THE NEW POLE BASE IF BASE IS 9 FEET (CENTER TO CENTER) FROM THE EXISTING POLE BASE. IF BASE IS WITHIN 6 FOOT (CENTER TO CENTER), ANCHORS SHALL BE INSTALL ON THE EXISTING POLE DURING CONSTRUCTION OF THE NEW BASE. THE CONTRACTOR CAN REMOVE THE ANCHORS FROM THE EXISTING POLE WITH THE ENGINEERS' APPROVAL. THE CASING SHALL BE INCIDENTAL TO THE INSTALLATION OF THE POLE BASE.

