

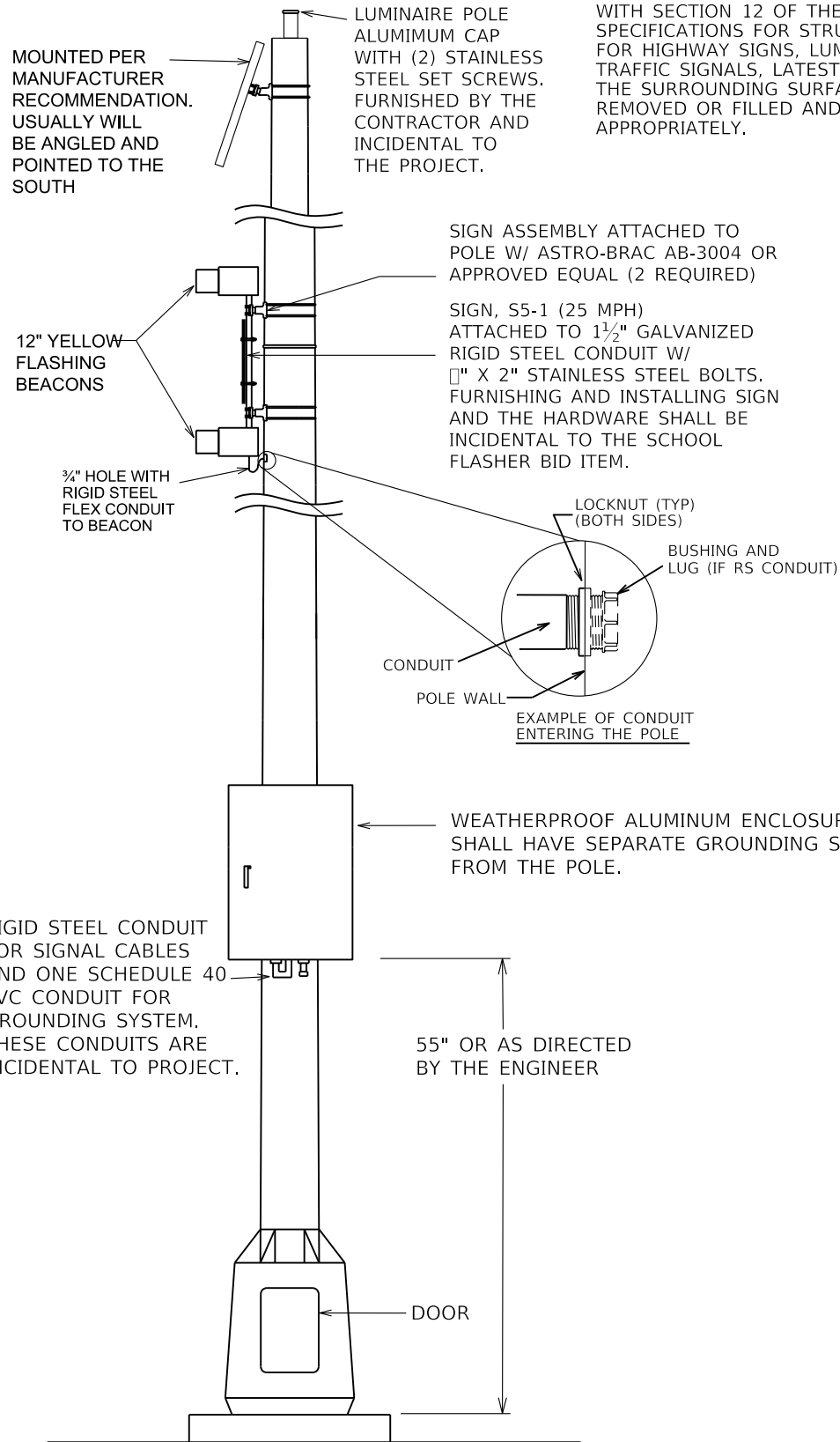
COUNTY OF	ITEM NO.	SHEET NO.

FILE NAME: C:\USERS\JESSICA.GOODWIN\DESKTOP\18-SCHOOL SIDEMOUNT SOLAR (SF).DGN

USER: Jessica.Goodwin  
DATE PLOTTED: November 3, 2022

E-SHEET NAME:

OpenRoads Designer v23.00.01.11

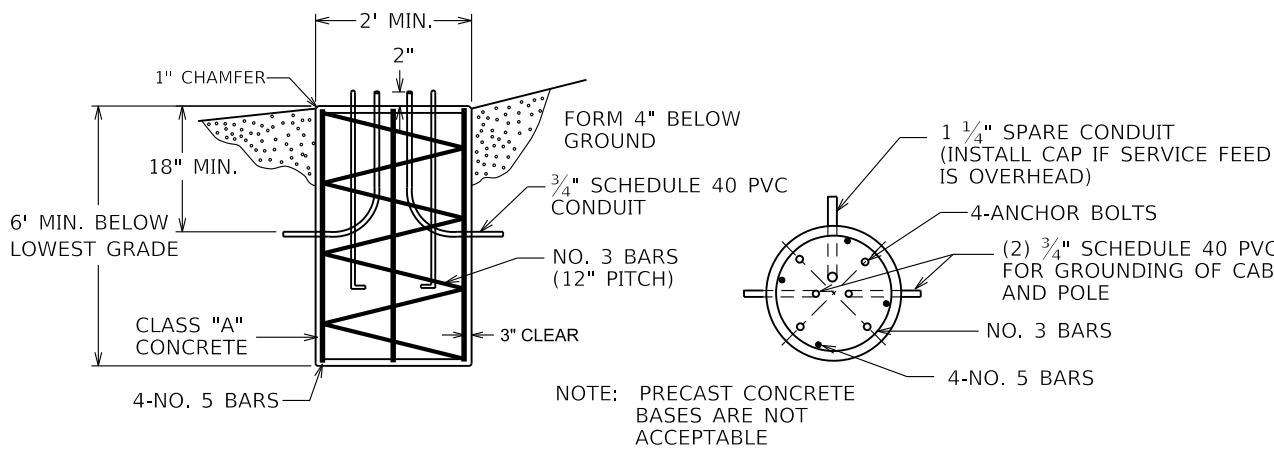


THE BOTTOM OF THE LOWER SIGNAL FACE HOUSING SHALL NOT BE LESS THAN 12 FEET ABOVE THE PAVEMENT GRADE OF THE CENTER OF THE ROADWAY. THE TOP OF THE UPPER SIGNAL FACE HOUSING SHALL NOT BE MORE THAN 24 FEET ABOVE THE PAVEMENT GRADE OF THE CENTER OF THE ROADWAY.

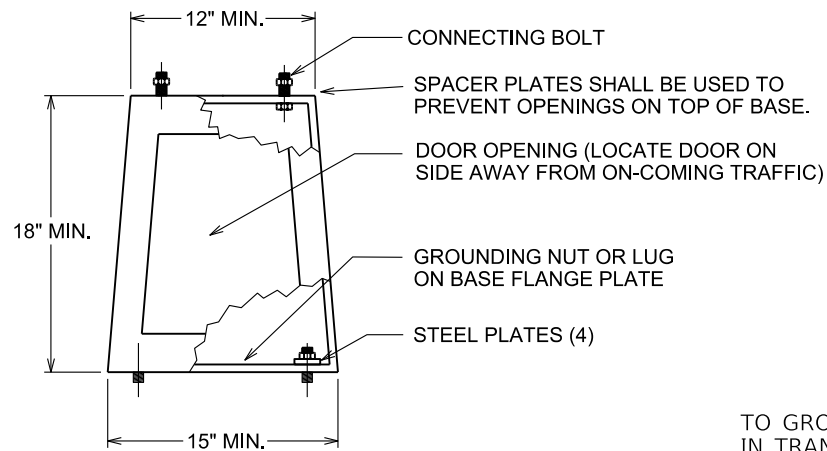
9-8-2025

BREAKAWAY SUPPORTS SHALL COMPLY WITH SECTION 12 OF THE STANDARD SPECIFICATIONS FOR STRUCTURAL SUPPORTS FOR HIGHWAY SIGNS, LUMINAIRES AND TRAFFIC SIGNALS, LATEST EDITION. THE SURROUNDING SURFACE SHOULD BE REMOVED OR FILLED AND SLOPED APPROPRIATELY.

### BREAKAWAY SUPPORT STUB HEIGHT MEASUREMENT



### FOUNDATION DETAIL



CONCRETE BASES SHALL BE POURED LEVEL. NO MORE THAN A ¾" GAP SHALL EXIST BETWEEN CONCRETE BASE AND TRANSFORMER BASE WHEN THE POLE IS PLUMBED.

### CAST ALUMINUM TRANSFORMER BASE

NOTE: ALL TRANSFORMER BASES SHALL CONFORM TO THE STANDARD SPECIFICATIONS FOR STRUCTURAL SUPPORTS FOR HIGHWAY SIGNS, LUMINAIRES AND TRAFFIC SIGNALS AS PUBLISHED BY THE AMERICAN ASSOCIATION OF STATE HIGHWAY AND TRANSPORTATION OFFICIALS, LATEST EDITION. ALL TRANSFORMER BASE DOORS SHALL BE CONSTRUCTED OF HIGH-DENSITY POLYETHYLENE IN A MATCHING COLOR.



S5-1  
24" X 48" or 36" X 72"  
(see Special Note for size)  
.125 GA. ALUM

Type XI - Fluorescent Yellow-Green

Type XI - White

Special Note:  
Size of sign shall be noted on the plan sheet.

36" X 72" for four or more lanes with normal posted speed of 40 mph or greater.  
24" X 48" for all other conditions.

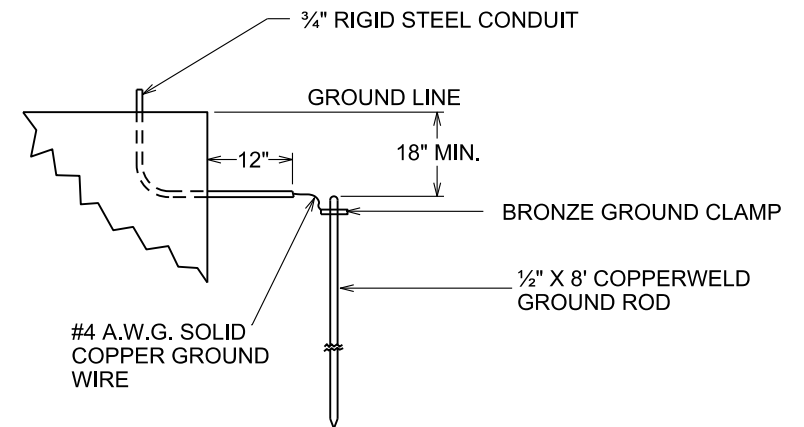
### GROUNDING REQUIREMENTS:

CONTRACTOR SHALL PROVIDE A MINIMUM OF 6 INCHES OF GROUND WIRE FOR TESTING PRIOR TO CONNECTING THE WIRE TO TRANSFORMER BASE.

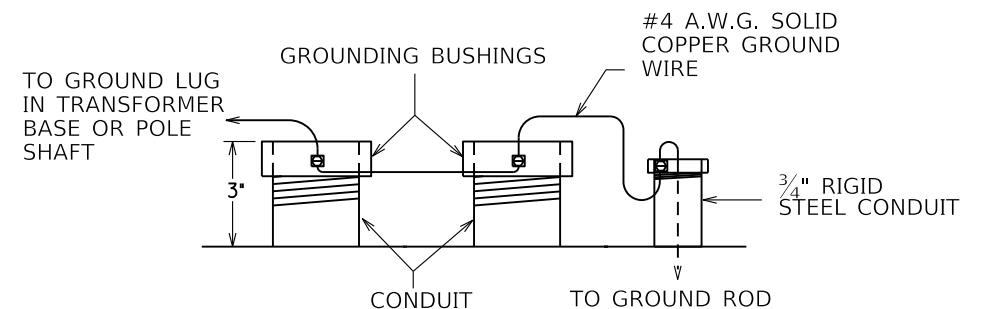
POLE/TRANSFORMER BASE GROUND - GROUND WIRE SHALL COME FROM THE GROUND ROD THROUGH THE PVC CONDUIT, CONNECTING TO THE TRANSFORMER BASE/POLE AND THEN TO EACH RIGID STEEL GROUNDING BUSHING.

### NOTES:

ALL CONDUITS USED FOR THE GROUNDING, SPARES AND CONDUCTORS THAT ARE INSTALLED IN THE POLE BASE ARE INCIDENTAL TO BID ITEM "4740". THIS INCLUDES PROVIDING A MINIMUM OF 24 INCHES OF CONDUIT PAST THE EDGE OF THE POLE BASE.



### POLE GROUNDING DETAIL



### CONDUIT GROUNDING DETAIL

SOLAR SCHOOL FLASHER  
DETAIL