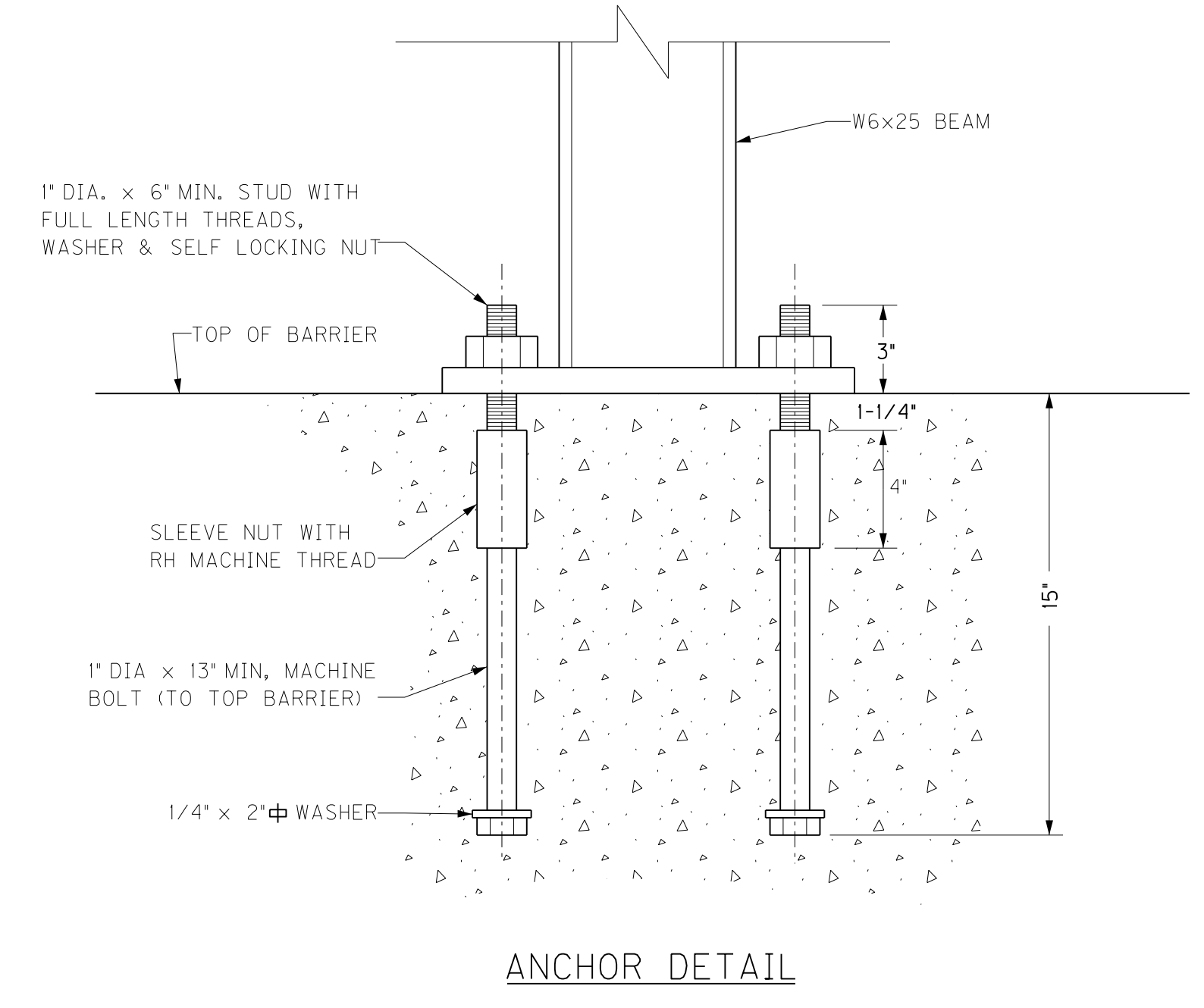
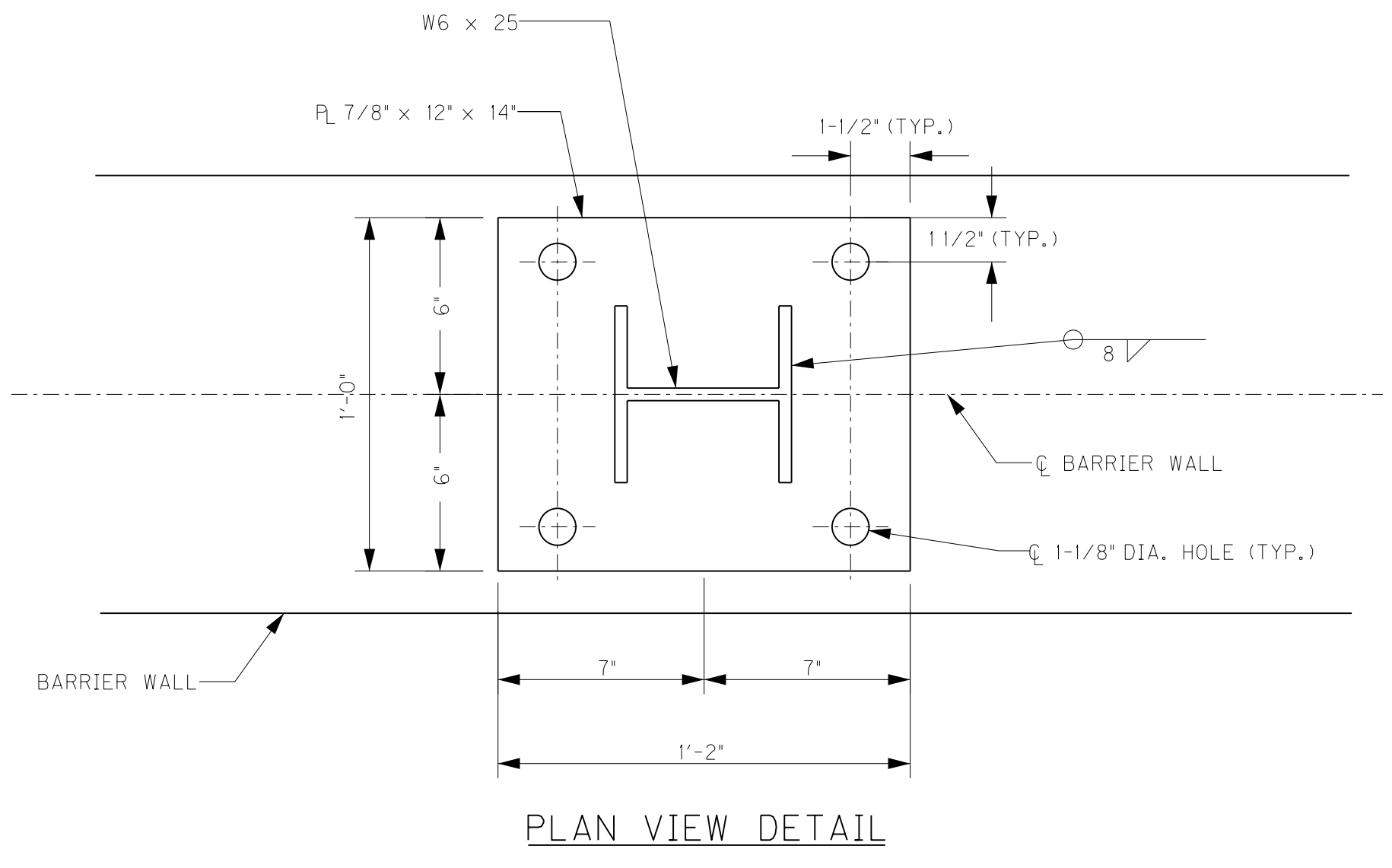


COUNTY OF	ITEM NO.	SHEET NO.

FILE NAME: G:\PWORK\JARROD.STANLEY\060939\1013 FINAL - BARRIER WALL MOUNTING DETAIL SHEET.DGN
 USER: jarrrod.stanley
 DATE PLOTTED: August 11, 2016
 E-SHEET NAME:
 MicroStation v8.11.7.443

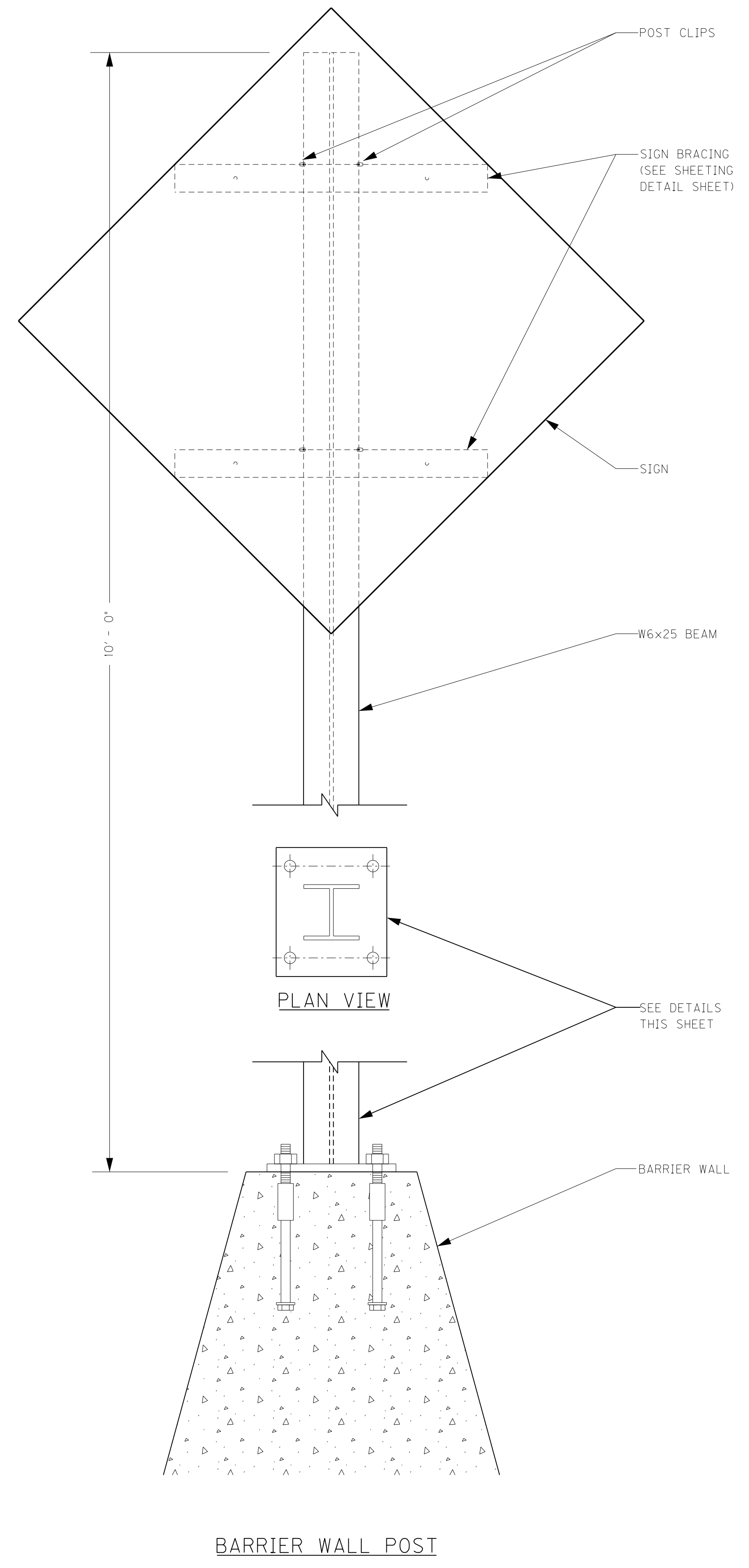


GENERAL NOTES:
 POST CLIPS, BRACKETS AND SIGN TO BE CAPABLE OF SUSTAINING 20 LBS. PER SQUARE FOOT OF SIGN AREA.

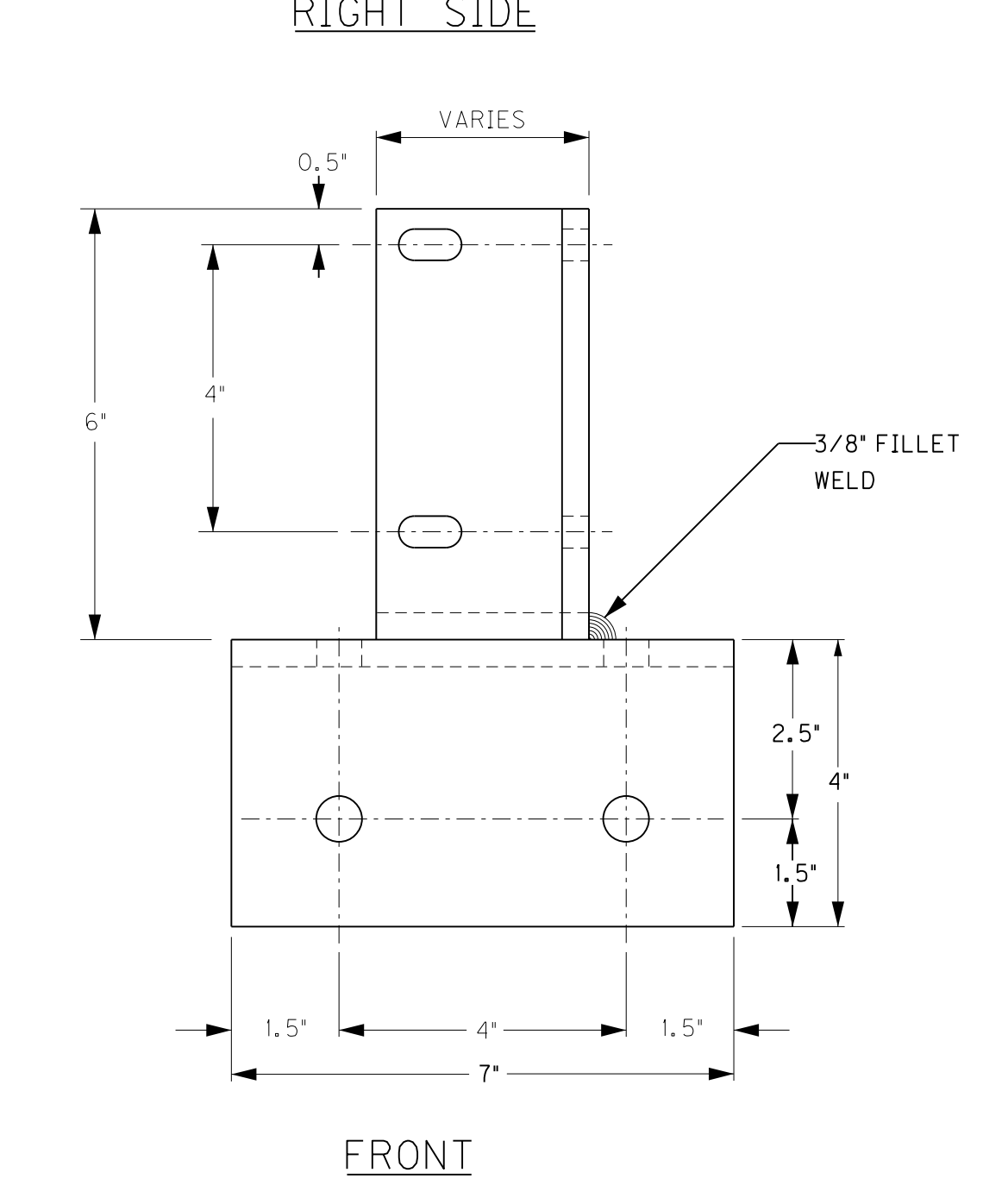
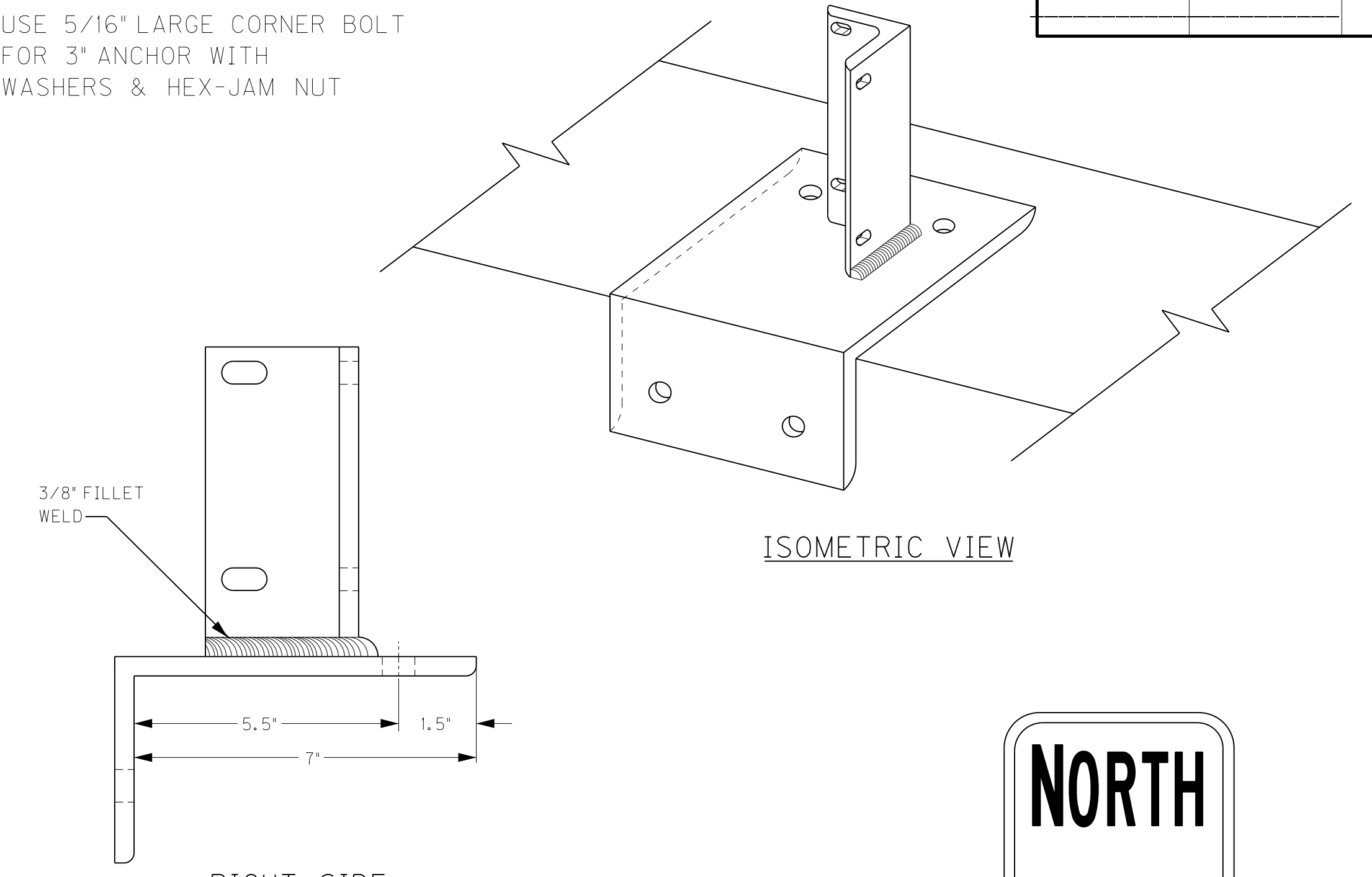
THE COST FOR MAKING THE WALL POST AND ANY HARDWARE REQUIRED TO COMPLETE THE INSTALLATION SHALL BE INCLUDED IN THE COST OF BARRIER WALL POST.

ANCHOR ALTERNATIVES:
 DRILL 1-3/8" O X 14" HOLE FOR #8 X 16" REINFORCING BAR WITH 1" X 4" MACHINE THREADS. BOND ANCHORS IN HOLE WITH POLYESTER RESIN.

MATERIAL SPECIFICATIONS:
 ALL STEEL TO BE FROM ASTM A572. ALL HOLES SHALL BE DRILLED. PLATE CUTS SHALL BE SAW CUT AND ALL EDGES GROUND SMOOTH. BOLT MATERIALS SHALL BE ASTM A307 OR EQUIVALENT AND BE GALVANIZED. GALVANIZE AFTER FABRICATION PER ASTM A123.



USE 5/16" LARGE CORNER BOLT FOR 3" ANCHOR WITH WASHERS & HEX-JAM NUT



NOTES:
 ALL ROUND HOLES 5/8" O AND ALL OBLONG HOLES ARE 7/16" X 7/8".

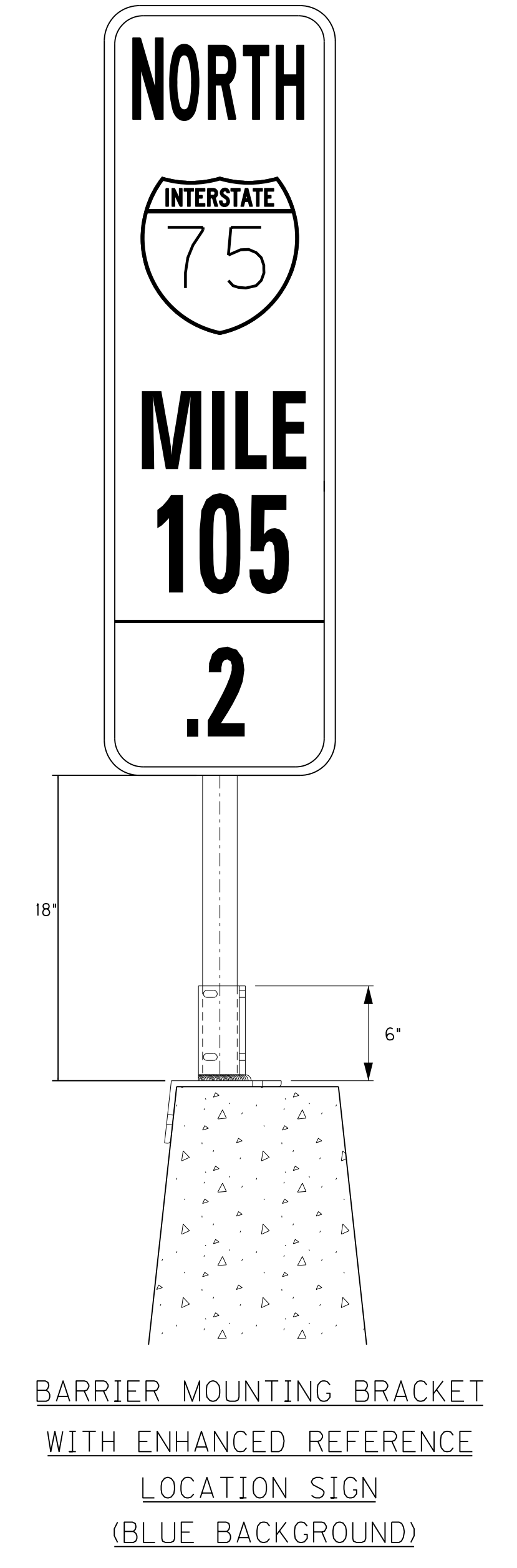
ALL HARDWARE SHALL BE GALVANIZED STEEL OR STAINLESS STEEL AS SPECIFIED.

ALL WORK AND MATERIALS SHALL BE IN ACCORDANCE WITH STANDARD SPECIFICATIONS.

ATTACH TO BARRIER WALL USING 1/2" X 13 TPI GRADE 8 BOLTS WITH CONCRETE ANCHOR.

IF GALVANIZE COATING IS DAMAGED, TREAT WITH COLD GALVANIZING COMPOUND SPRAY.

MATERIALS:
 ASTM A36 STRUCTURAL ANGLE, 3/8" THICK WITH 3/8" FILLET WELD.



BARRIER WALL MOUNTING DETAILS

NOT TO SCALE