

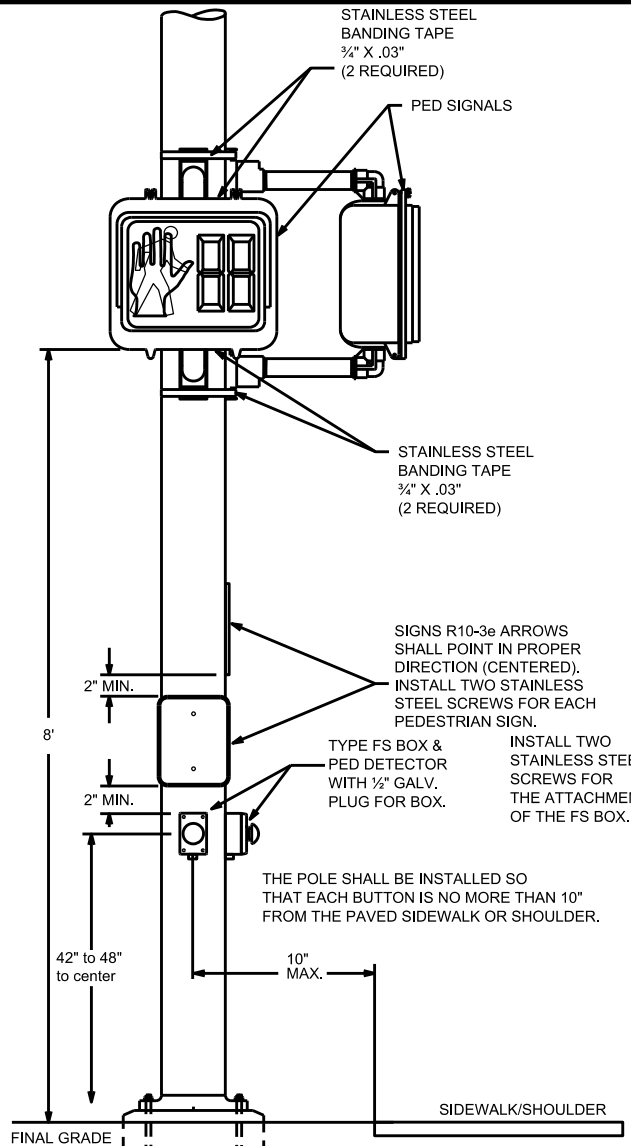
FILE NAME: C:\USERS\JESSICA.GOODWIN\DESKTOP\6-PED SIGNAL COUNTDOWN (PO).DGN

USER: jessica.goodwin
DATE PLOTTED: October 18, 2022

E-SHEET NAME:

OpenRoads Designer v23.00.01.11

COUNTY OF	ITEM NO.	SHEET NO.



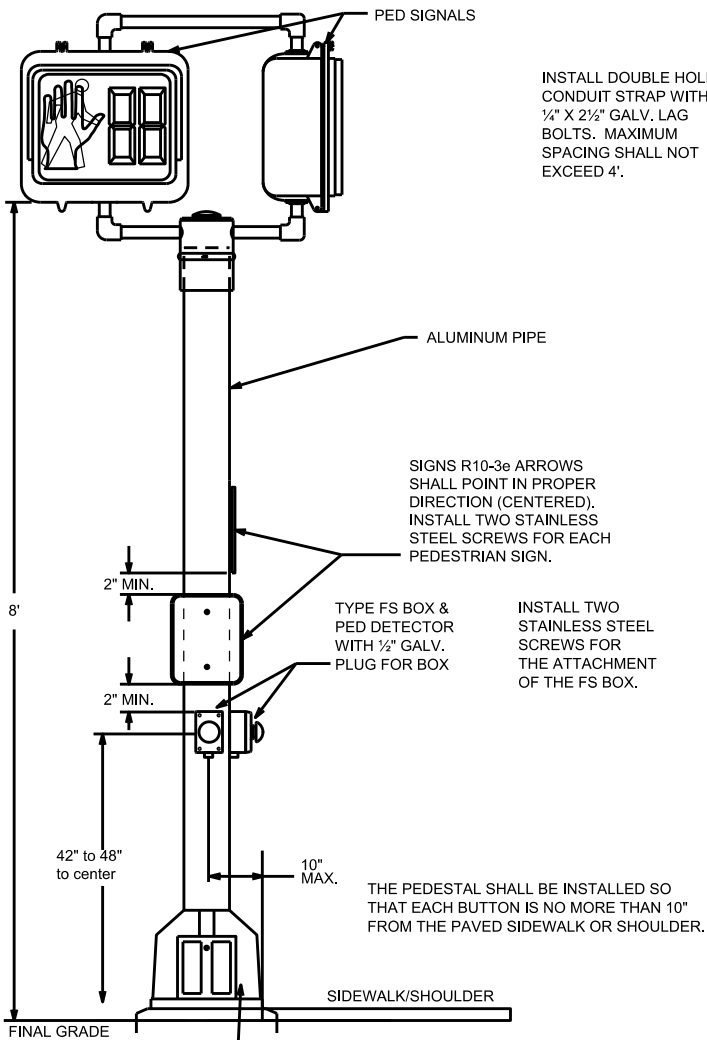
THE POLE SHALL BE INSTALLED SO THAT EACH BUTTON IS NO MORE THAN 10" FROM THE PAVED SIDEWALK OR SHOULDER.

CONTRACTOR SHALL DRILL HOLES IN THE STEEL STRAIN POLE AND THE TYPE FS BOX NOT EXCEEDING 1/2" IN DIAMETER. CONTRACTOR SHALL USE A ROUND FILE TO REMOVE ALL BURRS AND SHARP EDGES FORM THE HOLES. WIRES SHALL BE PROTECTED WITH HEAT SHRINK TUBING OR VINYL TAPE WHERE THEY PASS THROUGH THE HOLES.

STEEL STRAIN POLE DETAIL FOR PED DETECTORS AND PED SIGNALS

NOTE:
ALL GROUNDING AND SPARE CONDUITS THAT ARE INSTALLED IN THE CONCRETE PEDESTAL POLE BASE ARE INCIDENTAL TO BID ITEM "23222EC". THIS INCLUDES PROVIDING A MINIMUM OF 24 INCHES OF CONDUIT PAST THE EDGE OF THE CONCRETE BASE. AN ARROW SHALL BE ETCHED INTO THE TOP OF THE PEDESTAL BASE TO SHOW LOCATION AND DIRECTION OF THE SPARE CONDUIT.

THERE SHALL BE A 2.5' (MIN.) X 4' (MIN.) CLEAR SPACE AT ALL PEDESTRIAN BUTTONS PER SECTION 404 OF PROWAG REQUIREMENTS.



THERE SHALL BE AT LEAST 4 FEET OF USABLE SIDEWALK IF A PORTION OF THE PEDESTAL BASE IS INSTALLED IN THE SIDEWALK. IF INSTALLED IN A SIDEWALK, THE PEDESTAL BASE SHALL BE INSTALLED FLUSH WITH THE GRADE.

SEE PEDESTAL POLE BASE DETAIL FOR CONCRETE BASE DETAIL AND GROUNDING DETAILS

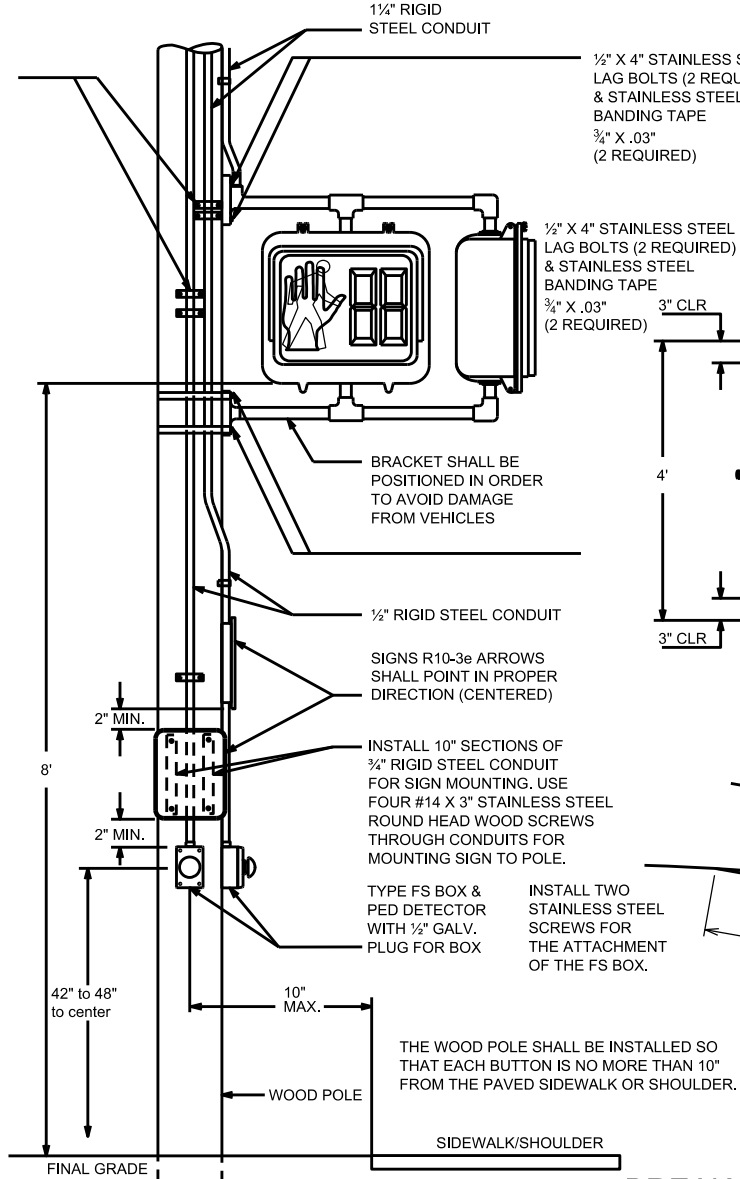
CONTRACTOR SHALL DRILL HOLES IN THE PIPE AND THE TYPE FS BOX NOT EXCEEDING 1/2" IN DIAMETER. CONTRACTOR SHALL USE A ROUND FILE TO REMOVE ALL BURRS AND SHARP EDGES FROM THE HOLES. WIRES SHALL BE PROTECTED WITH HEAT SHRINK TUBING OR VINYL TAPE WHERE THEY PASS THROUGH THE HOLES.

PEDESTAL POLE DETAIL FOR PED DETECTORS AND PED SIGNALS

GROUNDING REQUIREMENTS:

CONTRACTOR SHALL PROVIDE A MINIMUM OF 6 INCHES OF GROUND WIRE FOR TESTING PRIOR TO CONNECTING THE WIRE TO THE TRANSFORMER BASE.

PEDESTAL POLE GROUND - GROUND WIRE SHALL COME FROM THE GROUND ROD THROUGH THE PVC CONDUIT, CONNECTING TO A GROUND LUG ON THE TRANSFORMER BASE AND THEN TO EACH RIGID STEEL GROUNDING BUSHING. ALL GROUND RODS SHALL BE 24" FROM THE CONCRETE POLE BASE.

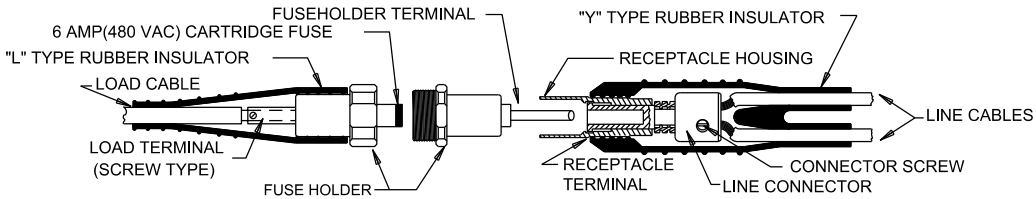


THE WOOD POLE SHALL BE INSTALLED SO THAT EACH BUTTON IS NO MORE THAN 10" FROM THE PAVED SIDEWALK OR SHOULDER.

#9 X 1 1/2" STAINLESS STEEL PAN HEAD OR ROUND HEAD WOOD SCREWS SHALL BE USED TO SECURE TYPE FS BOX TO POLE. A MINIMUM OF 2 SCREWS PER BOX, INSTALLED DIAGONALLY, SHALL BE USED.

WOOD POLE DETAIL FOR PED DETECTORS AND PED SIGNALS

BREAKAWAY FUSE CONNECTOR KIT

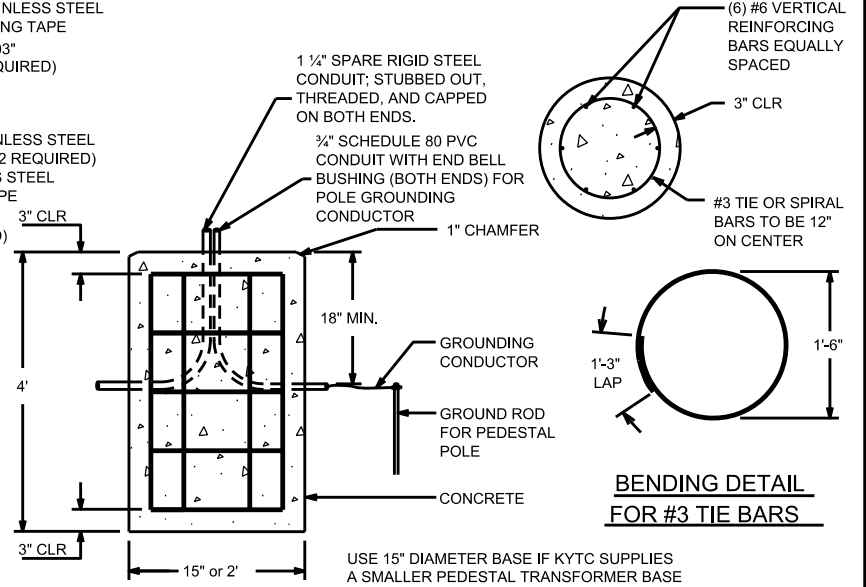


DETAILS OF TYPE HEB-JW-RYC CONNECTOR

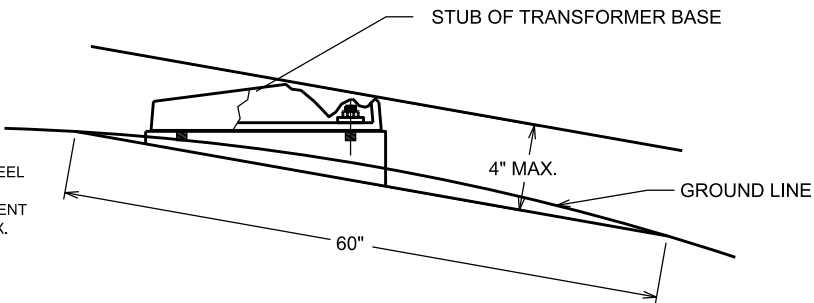


TYPE HEB-JW-RYC CONNECTOR SHOWN

SPECIAL NOTE FOR THE TRANSFORMER BASE: FUSED CONNECTOR KITS SHALL BE INSTALLED FOR ALL 120 VOLT WIRING IN TRANSFORMER BASES. THIS WILL ONLY BE NEEDED FOR PEDESTRAIN HEADS AND SIGNALS HEADS. PEDESTRAIN DETECTORS DO NOT REQUIRE FUSED CONNECTOR KITS. CONTRACTOR CAN USE ONE KIT FOR A COMMON NEUTRAL FOR ALL DEVICES IN THE TRANSFORMER BASE. THERE SHALL BE A METAL LUG INSTALLED IN THE NEUTRAL WIRE KIT INSTEAD OF A FUSE.



PEDESTAL POLE BASE DETAIL



THE ANCHOR BOLTS AND CONDUITS SHALL NOT BE PROJECTED MORE 4 INCHES ABOVE A GROUND LINE BETWEEN THE STRADDLING WHEELS OF A VEHICLE.

BREAKAWAY SUPPORT STUB HEIGHT MEASUREMENT

NOTE:
THE PEDESTAL BASE DOOR SHALL HAVE A 4" BY 6" SHOCK HAZARD WARNING STICKER (IF SMALLER TRANSFORMER BASE IS INSTALLED USE A 2" BY 3" INSTEAD). INSTALL 3" FROM THE TOP OF THE DOOR. THE STICKER SHALL BE METALCRAFT PLY695 PREM STYLEMARK LABEL WITH .007 THICKNESS, WITH UV WHITE POLYCARBONATE MATERIAL, AND WITH MC53FL PRESSURE SENSITIVE ADHESIVE OR APPROVAL EQUAL. THIS SHALL BE INCIDENTAL TO THE PROJECT.

SPECIAL NOTE FOR THE TRANSFORMER BASE: FURNISH A SHOCK HAZARD WARNING STICKER ON DISCONNECT WITH THE FOLLOWING INFORMATION:
VOLTAGE (120 VOLT)
GLOVE CLASS (0)
LIMITED APPROACH BOUNDARY (42 IN)
RESTRICTED APPROACH BOUNDARY (CONTACT)
SEE NFPA 70E FOR ADDITIONAL PPE REQUIRED

PEDESTRIAN SIGNAL COUNTDOWN DETAIL