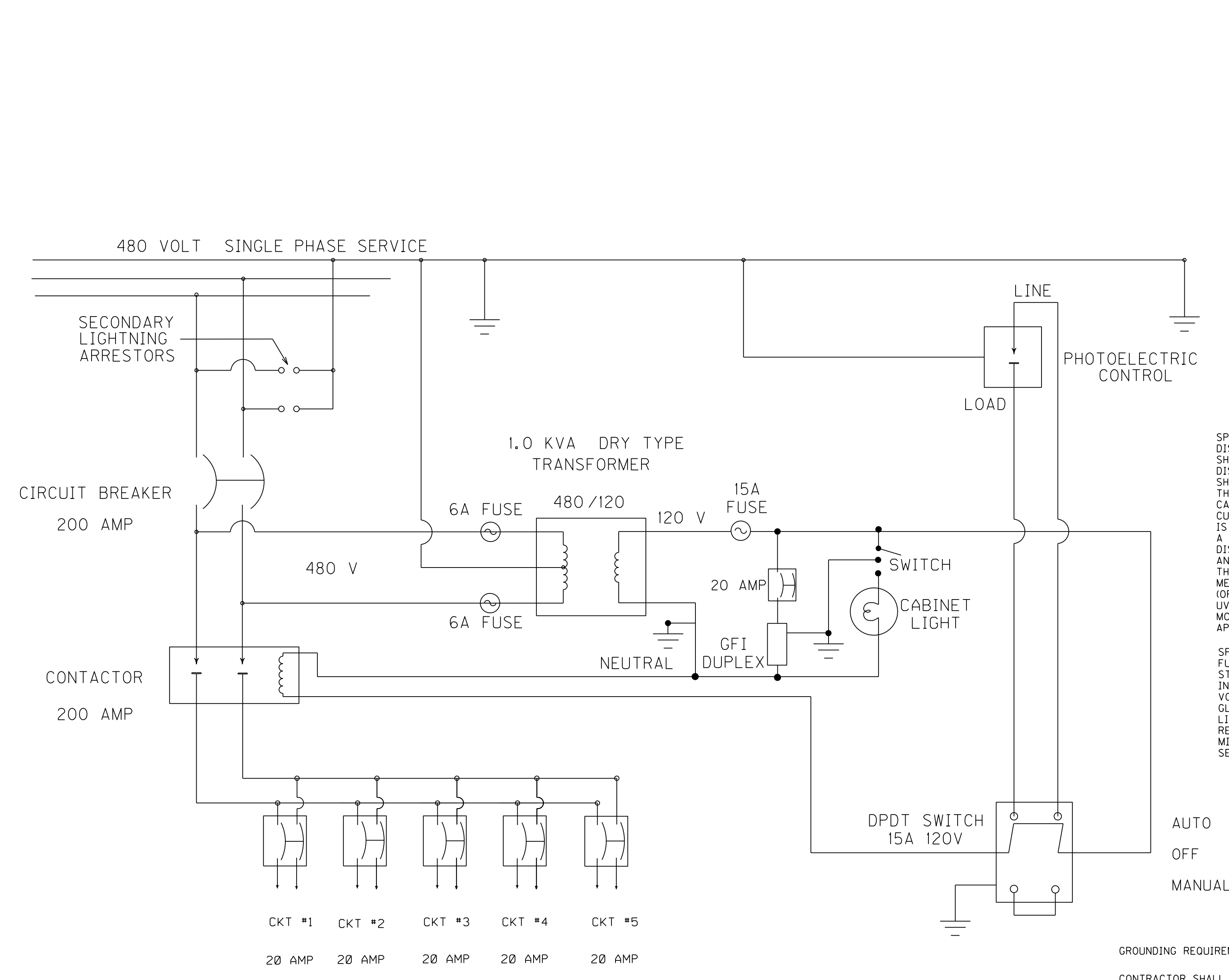


FILE NAME: G:\PWORK\TED.SWANSEGAR\MS28754\07_09_12-SERVICE (SE).DGN
 USER: ted.swansegar
 DATE PLOTTED: September 23, 2021
 E-SHEET NAME:
 MicroStation v8.11.9.832



SPECIAL NOTE:
 DISCONNECT(SAFETY SWITCH) AND METER BASE SHALL BE UL RATED FOR COMMERCIAL USE. DISCONNECTS (SAFETY SWITCH) AND METER BASE SHALL BE STAINLESS STEEL ENCLOSURE. THE CONTRACTOR SHALL BE RESPONSIBLE TO CALCULATE THE MAXIMUM AVAILABLE FAULT CURRENT FOR THE SERVICE EQUIPMENT THAT IS INSTALLED. THE CONTRACTOR SHALL SUPPLY A STICKER THAT WILL BE INSTALLED IN THE DISCONNECT WITH THE SYMMETRICAL RMS AMPERES AND THE DATE THAT THIS FAULT CURRENT IS CALCULATED. THE STICKER SHALL BE 4" LONG AND 4" WIDE AND BE METALCRAFT PLY425 PREM STYLEMARK LABEL (OR APPROVED EQUAL) WITH .007 THICKNESS, WITH UV WHITE POLYCARBONATE MATERIAL, AND WITH MC778 PRESSURE SENSITIVE ADHESIVE OR APPROVED EQUAL.

SPECIAL NOTE FOR THE DISCONNECT AND CABINET:
 FURNISH AN ARC FLASH AND SHOCK HAZARD WARNING STICKER ON DISCONNECT/CABINET WITH THE FOLLOWING INFORMATION:
 VOLTAGE (480 VOLT)
 GLOVE CLASS (0)
 LIMITED APPROACH BOUNDARY (42 IN)
 RESTRICTED APPROACH BOUNDARY (12 IN)
 MINIMUM CLOTHING ARC RATING (CAT 2)
 SEE NFPA 70E FOR ADDITIONAL PPE REQUIRED

GROUNDING REQUIREMENTS:

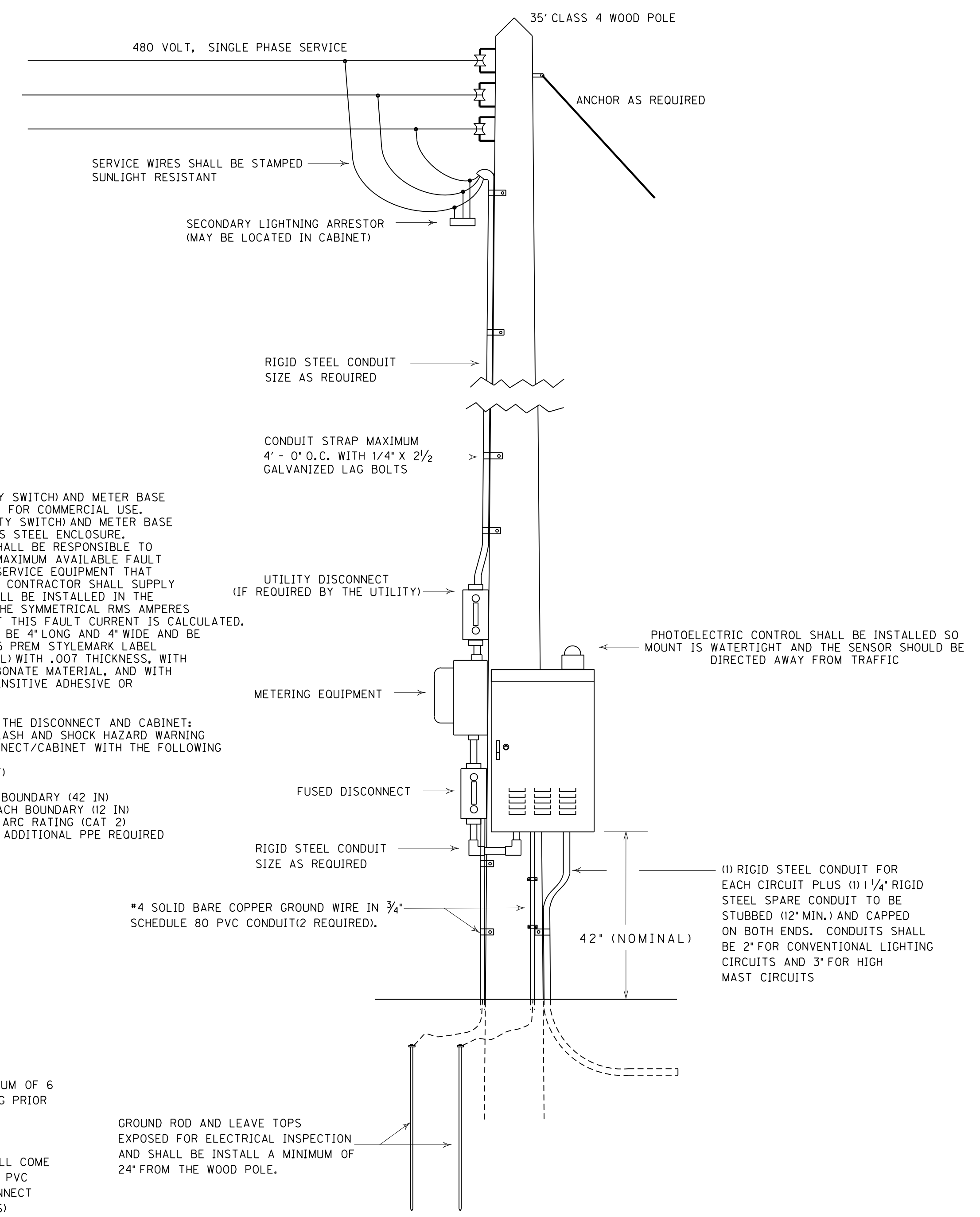
CONTRACTOR SHALL PROVIDE A MINIMUM OF 6 INCHES OF GROUND WIRE FOR TESTING PRIOR TO CONNECTING THE WIRE TO ANY DISCONNECT, CABINET OR POLE.

SERVICE GROUND - GROUND WIRE SHALL COME FROM THE GROUND ROD THROUGH THE PVC CONDUIT, CONNECTING TO THE DISCONNECT AND THEN TO EACH RIGID STEEL (R S) GROUNDING BUSHING.

CABINET GROUND - GROUND WIRE SHALL COME FROM THE GROUND ROD THROUGH THE PVC CONDUIT, CONNECTING TO THE CABINET GROUND BUS AND THEN TO EACH R S GROUNDING BUSHING.

NOTE:

ALL CONDUITS USED FOR GROUNDING, SPARE, AND SERVICE THAT ARE INSTALLED ON THE POLE AND/OR IN/TO THE CABINET ARE INCIDENTAL TO BID ITEM *4760*. THIS INCLUDES PROVIDING A MINIMUM OF 24 INCHES OF CONDUIT PAST THE EDGE OF THE WOOD POLE.



NOTE:
 ALL LIGHTING CABINETS SHALL BE MANUFACTURE PER UL508A, AND THERE SHALL BE A PERMANENT LABEL ON THE OUTSIDE STATING THAT IT HAS THIS CERTIFICATION.