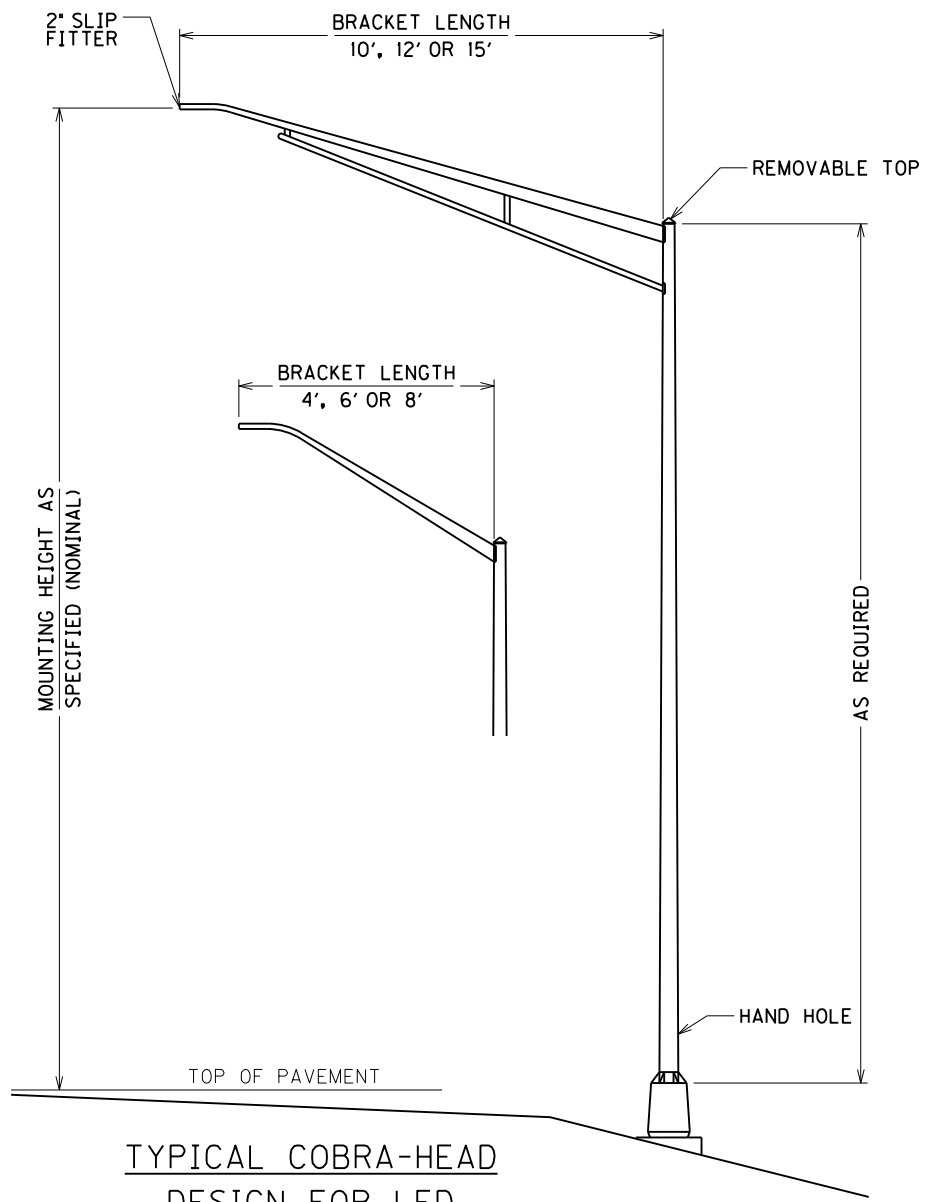
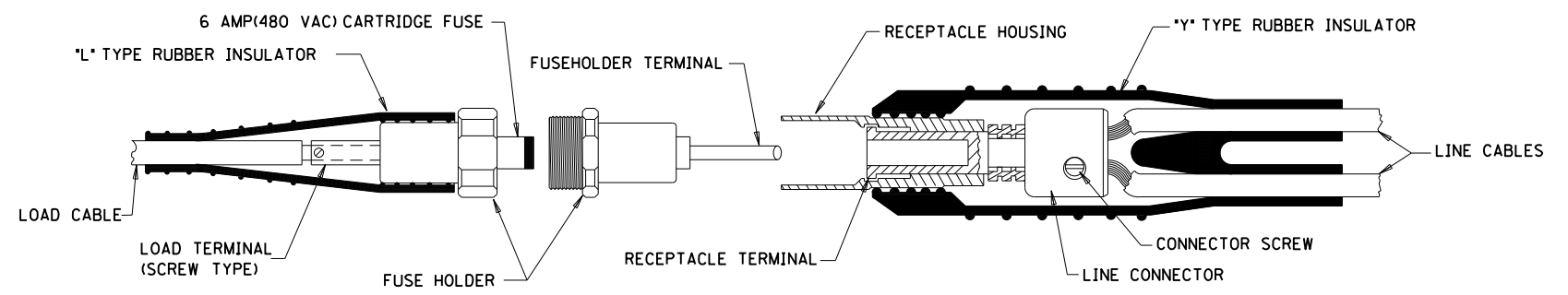


## BREAKAWAY FUSE CONNECTOR KIT

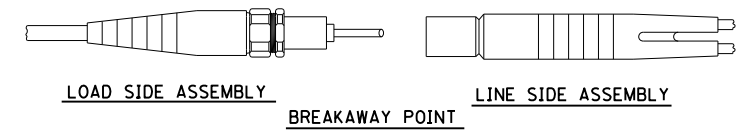


**TYPICAL COBRA-HEAD  
DESIGN FOR LED  
LUMINAIRES**

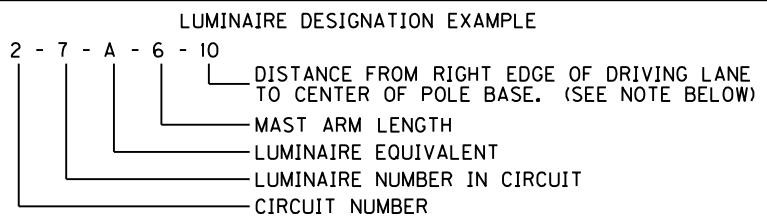
**SPECIAL NOTE:**  
ALL LUMINAIRES SHALL HAVE THE NEMA LABEL  
INSTALL ON THE BOTTOM OF THE FIXTURE TO  
VERIFY THE WATTAGE.



**DETAILS OF TYPE HEB-JW-RYC CONNECTOR**



**TYPE HEB-JW-RYC CONNECTOR SHOWN**



**NOTE:** IF NO SETBACK DIMENSION IS INDICATED, THE MAST ARM LENGTH DENOTES THE DISTANCE FROM THE RIGHT EDGE OF PAVEMENT TO CENTER OF POLE BASE.

**NOTE:**  
ALL TYPE A LUMINAIRES ARE MOUNTED AT 30' (NOMINAL) LED EQUIVALENT TO 100 WATTS HPS.  
ALL TYPE B LUMINAIRES ARE MOUNTED AT 30' (NOMINAL) LED EQUIVALENT TO 150 WATTS HPS.  
ALL TYPE C LUMINAIRES ARE MOUNTED AT 40' (NOMINAL) LED EQUIVALENT TO 250 WATTS HPS.  
ALL TYPE D LUMINAIRES ARE MOUNTED AT 40' (NOMINAL) LED EQUIVALENT TO 400 WATTS HPS.

**COBRA-HEAD LUMINAIRE/FUSE  
CONNECTOR DETAILS**

FILE NAME: C:\PW\WORK\TED.SWANSEGAR\UMS2875A\03-COBRAFUSE (CL).DGN  
 USER: ted.swansegar  
 DATE PLOTTED: January 30, 2018  
 E-SHEET NAME:  
 MicroStation v8.11.7.443